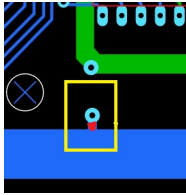
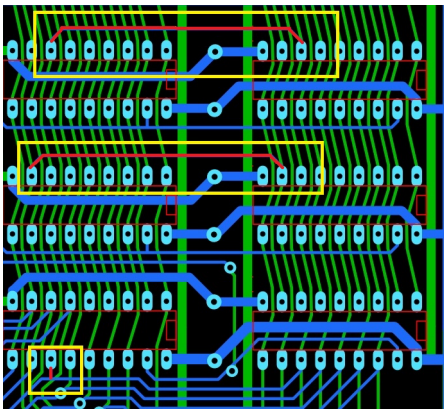


These connections will need to be made to have board function correctly  
The red trace needs to be added

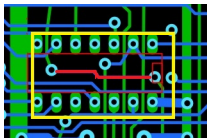
1. C21 top of board bridge to ground



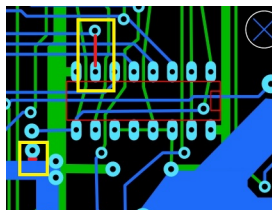
2. U31 top of board bridge pin 3 to blue trace
3. U32 pin 17 to U46 pin 17 top or bottom
4. U33 pin 16 to U47 pin 16 top or bottom



5. U56 join via under chip top or bottom



6. U59 pin 15 to via bottom
7. R32 bridge to vcc or use adjacent via



8. U16 remove pin 8 from 74ls04